

## Door blank with Oak veneer / 55 mm stiles and rails

**Facing:** 1,5 mm Oak veneer on cross banded plywood with 0,3 mm aluminium  
**Stiles:** 55 mm finger joint oak timber  
**Rails:** 55 mm finger joint oak timber  
**Core:** Polystyrene insulation

### U-Value:

U-Value - W/m²K									
60 mm	68 mm	73 mm							
0,85	0,76	0,73							

Heat conductivity is calculated on the basis of the practical heat conductivity of each included material - taken from data sheets and DS418:2011

### Weight:

Weight appr. Kg./m²									
60 mm	68 mm	73 mm							
15,2	16,3	16,4							

Size 1000 x 2000 mm.

### Performance:

	Classification standards	Performance
Operating Forces	EN12217	Class 5
Climatic Influences	EN12219	Class 3
Security	EN1627 / EN1628-30	N/A
Sound	EN10140-2	22 dB
Fire	EN13501-2 / EN1634-1	N/A
FSC Certified	FSC-STD-40-004 V2-1/FSC-STD-50-001 V1-2	N/A

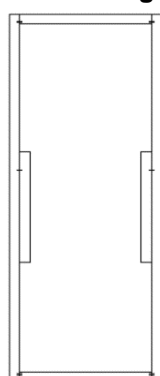
General tests has been carried out on a 68 mm. door blank with chen-chen veneer.  
 Sound tests has been carried out on a 60 mm. door blank with chen-chen veneer.  
 Size 1000 x 2100 mm. Stiles and rails 55 mm.

**Measure:** Min.: 250 x 450 mm - Max.: 1200 x 2400 mm

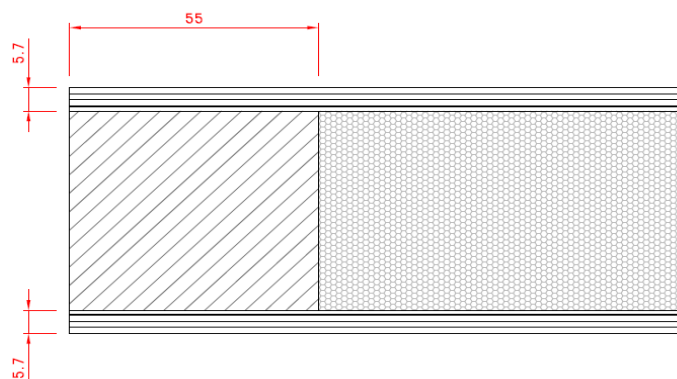
### Tolerances:

**Door blank:** Width/Height: +/- 1 mm - Diagonal: +/- 2 mm - Thickness: +/- 0,8 mm  
**Facing:** Measurements on facing is before final sanding  
**Stiles and rails:** Width: +/- 2 mm  
**Core:** Inserts: +/- 1 mm on plywood

### Elevation and section drawing:



Stiles and rails: Front perspective



Made: 05.03.2014	Data sheet: PMN	Draw.: HMN
Revised: 25.06.2024	Data sheet: OLN	Draw.: CRS