

Door blank with HDF / 55 mm stiles and rails

Facing: 4,0 mm HDF on veneer with 0,3 mm aluminium
Stiles: 55 mm finger joint pine timber
Rails: 55 mm finger joint pine timber
Core: Polystyrene insulation

U-Value:

| U-Value - W/m ² K | | | | | | | | | |
|------------------------------|-------|-------|-------|-------|--|--|--|--|--|
| 60 mm | 68 mm | 73 mm | 78 mm | 80 mm | | | | | |
| 0,78 | 0,69 | 0,67 | 0,63 | 0,61 | | | | | |

Heat conductivity is calculated on the basis of the practical heat conductivity of each included material - taken from data sheets and DS418:2011

Weight:

| Weight appr. Kg./m ² | | | | | | | | | |
|---------------------------------|-------|-------|-------|-------|--|--|--|--|--|
| 60 mm | 68 mm | 73 mm | 78 mm | 80 mm | | | | | |
| 15,9 | 16,8 | 17,4 | 18,0 | 18,2 | | | | | |

Size 1000 x 2000 mm.

Performance:

| | Classification standards | Performance |
|---------------------|---|-------------|
| Operating Forces | EN12217 | Class 5 |
| Climatic Influences | EN12219 | Class 2 |
| Security | EN1627 / EN1628-30 | N/A |
| Sound | EN10140-2 | 22 dB |
| Fire | EN13501-2 / EN1634-1 | N/A |
| FSC Certified | FSC-STD-40-004 V2-1/FSC-STD-50-001 V1-2 | N/A |

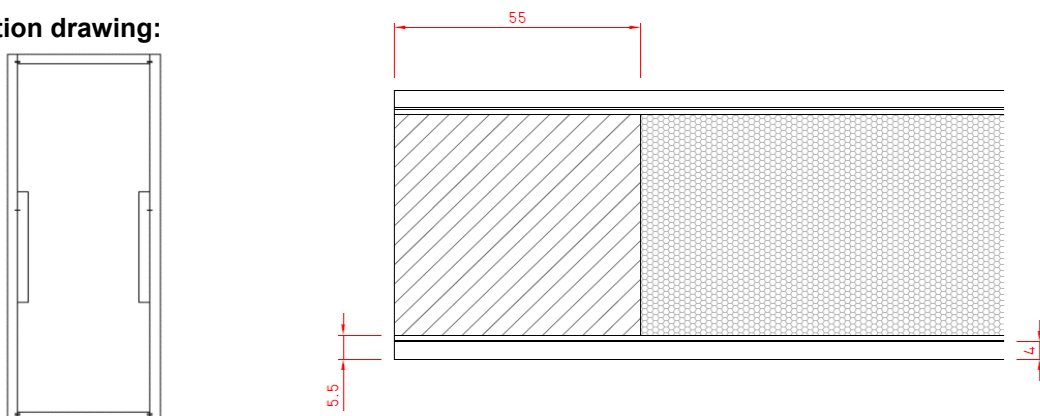
General tests has been carried out on a 68 mm. door blank with chen-chen veneer.
 Sound tests has been carried out on a 60 mm. door blank with chen-chen veneer.
 Size 1000 x 2100 mm. Stiles and rails 55 mm.

Measure: Min.: 250 x 450 mm - Max.: 1200 x 2400 mm

Tolerances:

Door blank: Width/Height: +/- 1 mm - Diagonal: +/- 2 mm - Thickness: +/- 0,8 mm
 Facing: Measurements on facing is before final sanding
 Stiles and rails: Width: +/- 2 mm
 Core: Inserts: +/- 1 mm on plywood

Elevation and section drawing:



Stiles and rails: Front perspective

| | | |
|---------------------|-----------------|------------|
| Made: 05.03.2014 | Data sheet: PMN | Draw.: HMN |
| Revised: 16.02.2026 | Data sheet: OLN | Draw.: CRS |