

Sound absorbing panels - Sound insulation value 39 dB

Panels HDF/HDF

Facing: 4 mm HDF

Core: Polystyrene / 9 mm Bitumen (BF43) / Polystyrene

U-Value:

U-Value - W/m ² K									
32 mm	43 mm	46 mm	48 mm	52 mm	54 mm				
1,49	1,00	0,92	0,87	0,79	0,76				

Heat conductivity is calculated on the basis of the practical heat conductivity of each included material - taken from data sheets and DS418, version 6, 2002. Also relating to EN 12524 and EN 10077-2.

Weight:

Weight appr. Kg./m ²									
32 mm	43 mm	46 mm	48 mm	52 mm	54 mm				
24,9	25,3	25,4	25,4	25,6	25,6				

Sound reduction:

Weighted sound reduction - Rw (C; Ctr)= 39 (-1; -4) dB									
All thicknesses									
39									

Measure:

Min.: 120 x 250 mm - Max.: 1200 x 2400 mm

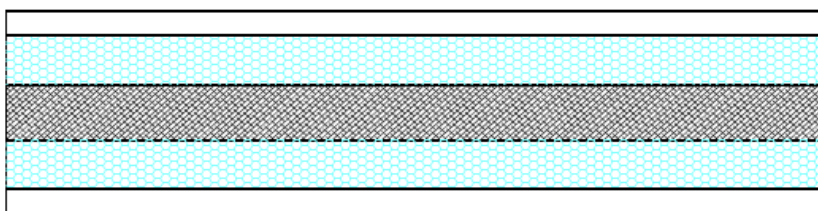
Tolerances:

Panel: Width/Height: +/- 1 mm - Diagonal: +/- 1,5 mm - Thickness: +/- 0,8 mm

Facing: Measurements on facing is before final sanding

Core: Inserts: +/- 1 mm on plywood

Section drawing:



Made: 26.03.2020	Data sheet: CRS	Draw.: CRS
Revised:	Data sheet:	Draw.: