

Panels Chen-Chen/Chen-Chen

Construction: 1,5 mm Chen-Chen veneer
1,5 mm cross grain veneer
1,5 mm long grain veneer
1,5 mm long grain inner veneer

Insulation - Polystyrene

(Appr. 33 kg/m³ - heat conductivity: 0,034 W/mK)

1,5 mm long grain inner veneer
1,5 mm long grain veneer
1,5 mm cross grain veneer
1,5 mm Chen-Chen veneer

U-Value:

U-Value - W/m ² K									
23 mm	24 mm	26 mm	28 mm	32 mm	34 mm	35 mm	36 mm	48 mm	
1,59	1,52	1,39	1,29	1,12	1,05	1,02	0,99	0,73	

Heat conductivity is calculated on the basis of the practical heat conductivity of each included material - taken from data sheets and DS418, version 6, 2002. Also relating to EN 12524.

Weight:

Weight appr. Kg./m ²									
23 mm	24 mm	26 mm	28 mm	32 mm	34 mm	35 mm	36 mm	48 mm	
6,4	6,5	6,5	6,6	6,8	6,8	6,9	6,9	7,4	

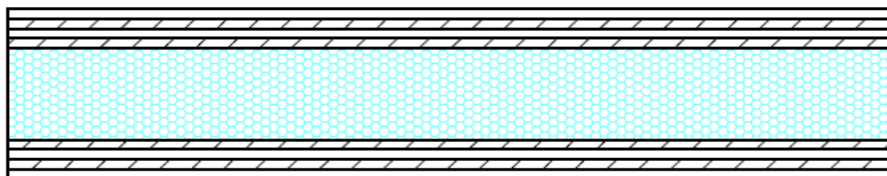
Measure:

Min.: 250 x 250 mm - Max.: 1200 x 2400 mm / 2400 x 1200 mm

Tolerances:

Width/Height: +/- 1 mm - Diagonal: +/- 2 mm - Thickness: +/- 0,8 mm

Section drawing:



Made: 10.03.14	Data sheet: PMN	Draw.: HMN
Revised:	Data sheet:	Draw.:

O.H.Industri A/S
Smedevej 17
DK - 7430 Ikast
+45 9725 1200
www.ohindustri.com