

Door blank with Mahogany veneer - 110 mm stiles and rails

Construction:

- 1,5 mm Mahogany veneer
- 1,5 mm cross grain veneer
- 1,5 mm long grain veneer
- 0,3 mm Aluminium - moisture barrier - stabilizer
- 1,5 mm long grain inner veneer
- Insulation - Polystyrene
- 1,5 mm long grain inner veneer
- 0,3 mm Aluminium - moisture barrier - stabilizer
- 1,5 mm long grain veneer
- 1,5 mm cross grain veneer
- 1,5 mm Mahogany veneer

U-Value:

U-Value - W/m ² K									
60 mm	68 mm	78 mm							
0,92	0,83	0,73							

Size 1000 mm x 2000 mm

Heat conductivity is calculated on the basis of the practical heat conductivity of each included material - taken from data sheets and DS418, version 6, 2002. Also relating to EN 12524.

Weight:

Weight appr. Kg./m ²									
60 mm	68 mm	78 mm							
22,3	24,2	26,7							

Size 1000 mm x 2000 mm

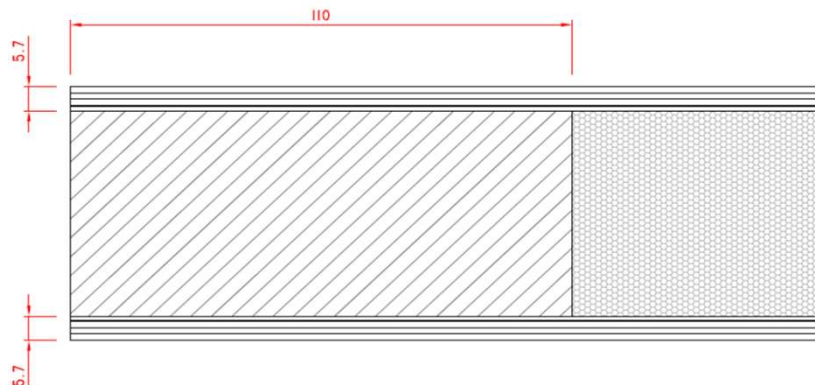
Measure:

Min.: 250 x 450 mm - Max.: 1200 x 2400 mm

Tolerances:

Width/Height: +/- 1 mm - Diagonal: +/- 2 mm - Thickness: +/- 0,8 mm

Section drawing:



Made: 05.03.2014	Data sheet: PMN	Draw.: HMN
Revised: 20.09.2019	Data sheet: CRS	Draw.: HMN

O.H.Industri A/S
Smedevej 17
DK - 7430 Ikast
+45 9725 1200
www.ohindustri.com