

## Door blank with Compact Laminate - 110 mm stiles and rails

**Construction:** 4 mm Compact laminate ( Appr. 1200-1500 kg/m<sup>3</sup> )  
 1,5 mm long grain veneer  
 0,3 mm Aluminium - moisture barrier - stabilizer  
 1,5 mm long grain inner veneer  
 Insulation - Polystyrene  
 1,5 mm long grain inner veneer  
 0,3 mm Aluminium - moisture barrier - stabilizer  
 1,5 mm long grain veneer  
 4 mm Compact laminate ( Appr. 1200-1500 kg/m<sup>3</sup> )

### U-Value:

U-Value - W/m <sup>2</sup> K									
60 mm	68 mm								
0,93	0,85								

Size 1000 mm x 2000 mm

Heat conductivity is calculated on the basis of the practical heat conductivity of each included material - taken from data sheets and DS418, version 6, 2002. Also relating to EN 12524.

### Weight:

Weight appr. Kg./m <sup>2</sup>									
60 mm	68 mm								
23,0	24,3								

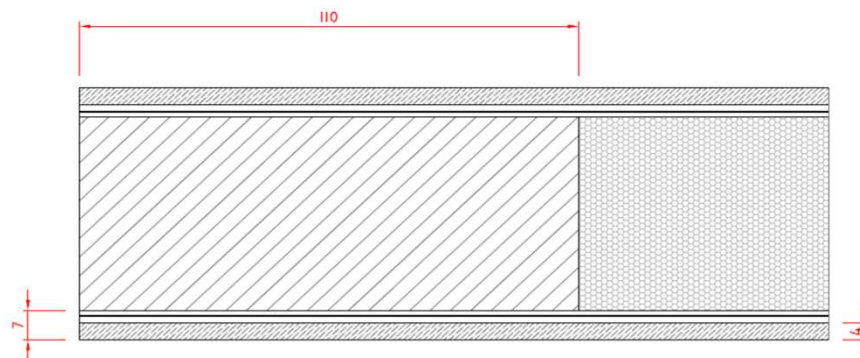
Size 1000 mm x 2000 mm

Compact Laminate: Calculation is based on an average weight value, specified for this material - 1350 kg/m<sup>3</sup>

**Measure:** Min.: 250 x 450 mm - Max.: 1200 x 2400 mm

**Tolerances:** Width/Height: +/- 1 mm - Diagonal: +/- 2 mm - Thickness: +/- 0,8 mm

### Section drawing:



Made: 05.03.2014	Data sheet: PMN	Draw.: HMN
Revised: 20.09.2019	Data sheet: CRS	Draw.: HMN

O.H.Industri A/S  
 Smedevej 17  
 DK - 7430 Ikast  
 +45 9725 1200  
[www.ohindustri.com](http://www.ohindustri.com)