

Door blank with Chen-Chen veneer - 110 mm stiles and rails - 4 mm SBD

Facing:	1,5 mm Chen-Chen veneer on cross banded plywood with 0,3 mm aluminum.
Stiles:	110 mm finger joint pine timber
Rails:	110 mm finger joint pine timber
Core:	Polystyrene insulation + 2x4 mm plywood SBD

U-Value:	U-Value - W/m ² K									
	44 mm	54 mm	58 mm	60 mm	68 mm					
	1,28	1,05	0,98	0,95	0,85					

Heat conductivity is calculated on the basis of the practical heat conductivity of each included material - taken from data sheets and DS418:2011

Weight:	Weight appr. Kg./m ²									
	44 mm	54 mm	58 mm	60 mm	68 mm					
	15,7	17,5	18,2	18,5	19,8					

Size 1000 x 2000 mm.

Performance:	Classification standards		Performance
	Operating Forces	EN12217	
Climatic Influences	EN12219		Class 3
Security	EN1627 / EN1628-30		N/A
Sound	EN10140-2		22 dB
Fire	EN13501-2 / EN1634-1		N/A
FSC Certified	FSC-STD-40-004 V2-1/FSC-STD-50-001 V1-2		N/A

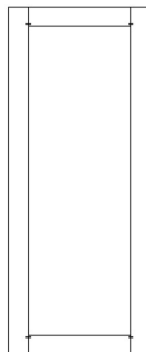
General tests has been carried out on a 68 mm. door blank with chen-chen veneer.
Sound tests has been carried out on a 60 mm. door blank with chen-chen veneer.
Size 1000 x 2100 mm. Stiles and rails 55 mm.

Measure: Min.: 250 x 450 mm - Max.: 1200 x 2400 mm

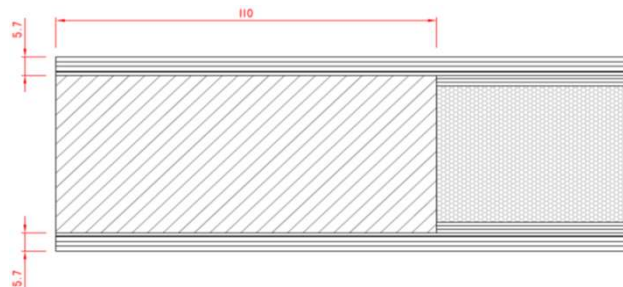
Tolerances:

Door blank:	Width/Height: +/- 1 mm - Diagonal: +/- 2 mm - Thickness: +/- 0,8 mm
Facing:	Measurements on facing is before final sanding
Stiles and rails:	Width: +/- 2 mm
Core:	Inserts: +/- 1 mm on plywood

Elevation and section drawing:



Stiles and rails: Front perspective



Made: 05.03.2014	Data sheet: PMN	Draw.: HMN
Revised: 11.05.2020	Data sheet: CRS	Draw.: CRS