

## Door blank with Oak veneer - 55 mm stiles and rails

**Construction:** 1,5 mm Oak veneer  
 1,5 mm cross grain veneer  
 1,5 mm long grain veneer  
 0,3 mm Aluminium - moisture barrier - stabilizer  
 1,5 mm long grain inner veneer  
 Insulation - Polystyrene  
 1,5 mm long grain inner veneer  
 0,3 mm Aluminium - moisture barrier - stabilizer  
 1,5 mm long grain veneer  
 1,5 mm cross grain veneer  
 1,5 mm Oak veneer

U-Value:	U-Value - W/m <sup>2</sup> K							
	54 mm	60 mm	68 mm					
	0,84	0,76	0,68					

Size 1000 mm x 2000 mm

Heat conductivity is calculated on the basis of the practical heat conductivity of each included material - taken from data sheets and DS418, version 6, 2002. Also relating to EN 12524.

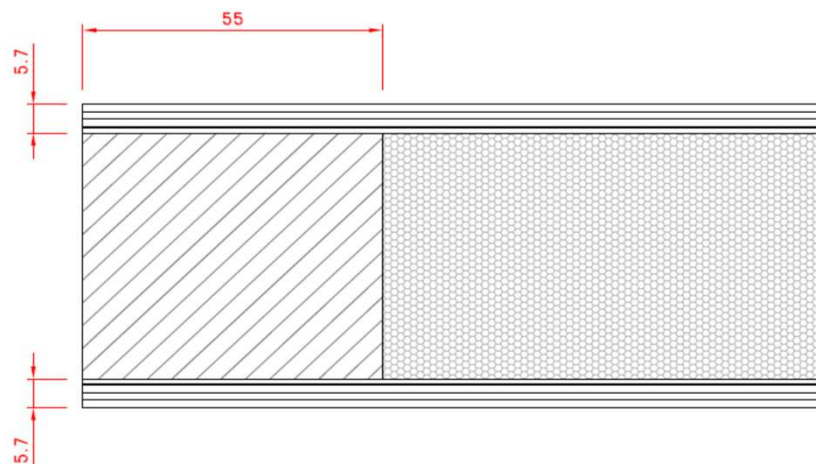
Weight:	Weight appr. Kg./m <sup>2</sup>							
	54 mm	60 mm	68 mm					
	16,8	17,7	18,9					

Size 1000 mm x 2000 mm

**Measure:** Min.: 250 x 450 mm - Max.: 1200 x 2400 mm

**Tolerances:** Width/Height: +/- 1 mm - Diagonal: +/- 2 mm - Thickness: +/- 0,8 mm

### Section drawing:



Made: 05.03.2014	Data sheet: PMN	Draw.: HMN
Revised: 20.09.2019	Data sheet: CRS	Draw.: HMN

O.H.Industri A/S  
 Smedevej 17  
 DK - 7430 Ikast  
 +45 9725 1200  
[www.ohindustri.com](http://www.ohindustri.com)