



Insulated Timber Doors 44 mm & 58 mm



Achieve a low U-Value with a high performance timber door

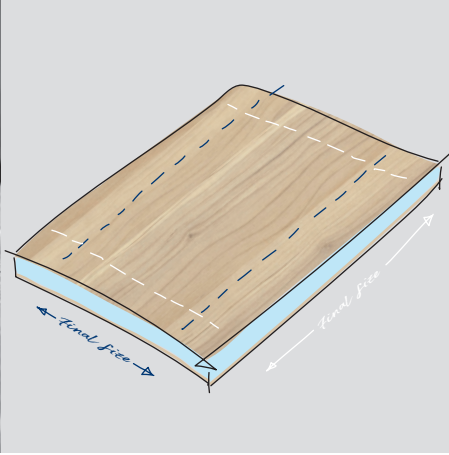
Extra stiles & rails to allow you to cut your door to size

Secure By Design

A cost effective way to produce a quality exterior door

Create endless designs from one door blank

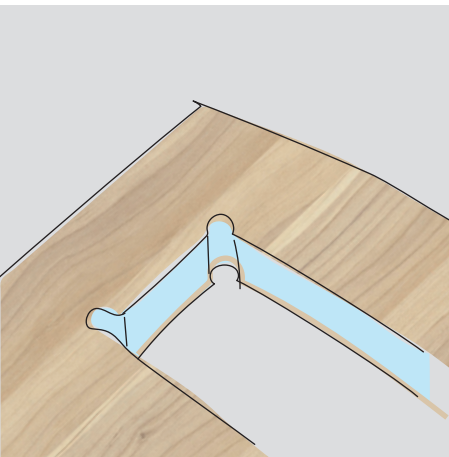
Fitting / Assembly Instruction



Cut to size

Each door blank can be cut to size to suit your requirements. Please see size options below and product data on the back page for more details.

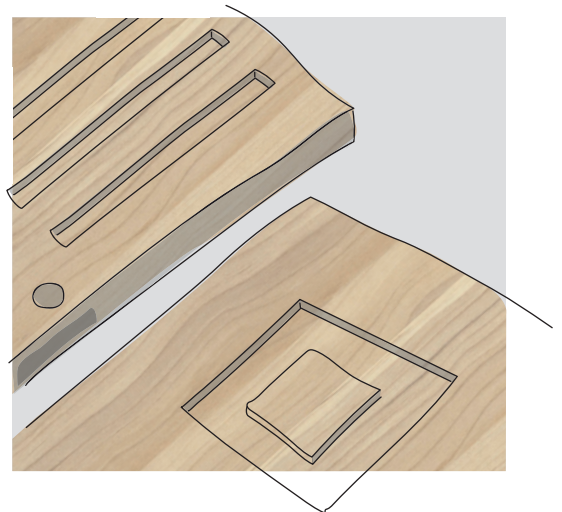
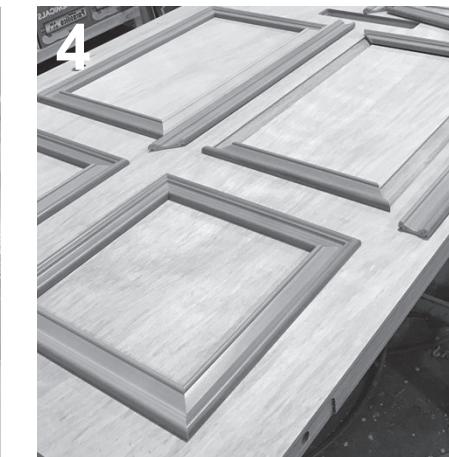
Stock Size width x height	Cut down to width x height
935 x 2,150 mm	715 x 1,750 mm
1,155 x 2,400 mm	935 x 2,000mm



Cut-outs

Prepare all cut-outs for glazing-hinges-spyholes letterboxes etc. using standard tools.

Should you require detailed information please refer to the OH Industri website.

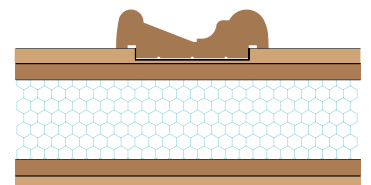


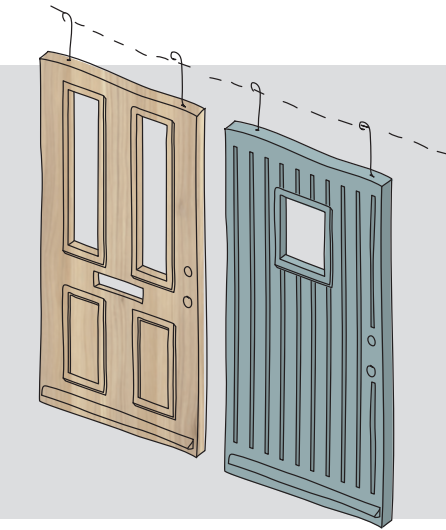
Grooves and rebating

The veneer surface can be grooved to a maximum depth of 3mm to create the desired design by using conventional tooling.

Rebating and fitting of bolection moulds

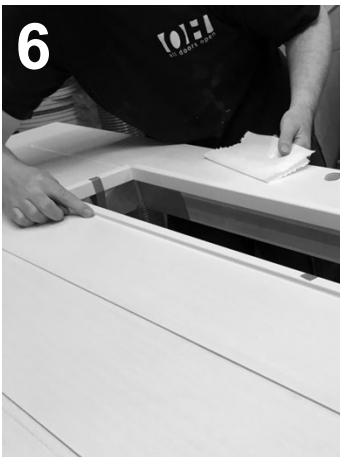
If you are using a bolection mould, rebate the surface of the door to a maximum of 3mm to receive the finished cassette as per diagram. Pin and glue to surface ensuring that you seal the edges.





Prime / Paint

There are no additional processes required when priming and paint OH Door Blanks. Simply follow the specification and recommendations from your paint supplier.



Fit hardware and glazing

Once the top coat is dry and ready to glaze, simply fit all required hardware as per your normal method and glaze the door if required.

Please refer to the OH Industri website to ensure the correct sealing and fitting guide lines are followed.



A door finished to your style

The OH Industri Door Blank gives you the flexibility to produce endless designs to suit most of your customer requirements.

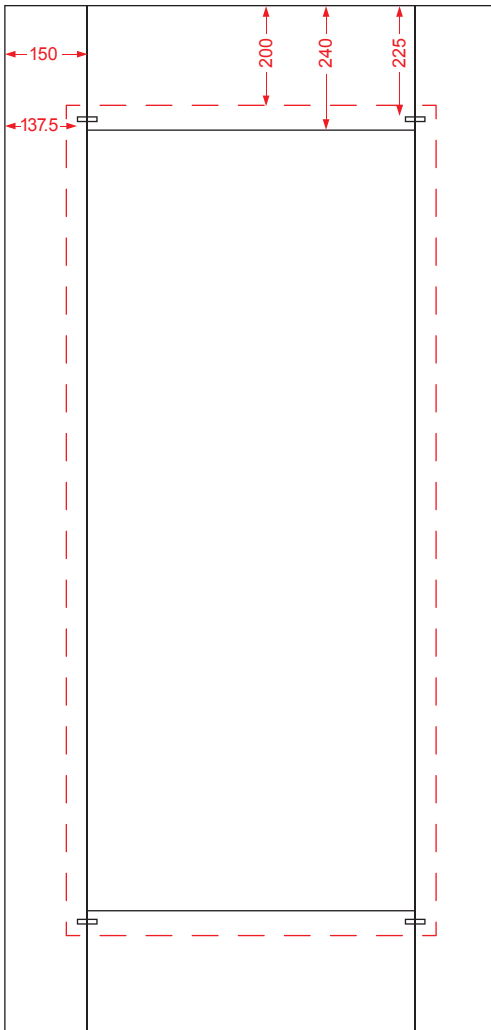
Low U-Values and a quality external entrance door without the complexity of a traditional frame door.

Please contact OH Industri or speak to your stockiest should you require additional information.

Specification	Thickness mm	U-Value W/m ² K	Core material	Weight kg/m ²	Dimension mm	Cut down to mm
ChenChen Sliced front veneer for paint with a 6mm cross banded veneer construction and a 0.3 mm aluminium layer.	44	1.28	Polystyrene	14.7	935 x 2,150 1,155 x 2,400	715 x 1,750 935 x 2,000
	58	0.98	Polystyrene	17.8	935 x 2,150 1,155 x 2,400	715 x 1,750 935 x 2,000

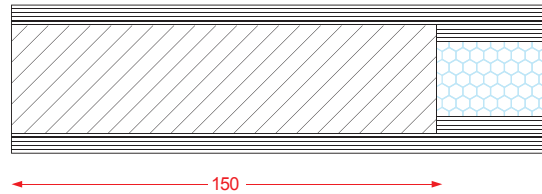
Front view

Indicates position of steel nails in corners



Section view view

Stiles 150 mm (Rails top/bottom 240 mm)



Standard Guide lines

- All cut outs for letter boxes, glazing, spy holes etc should be fully sealed to prevent water ingress.
- Protect all cut outs with alu tape to prevent any moisture entering the core of the door.
- Maximum depth for grooves on veneer is 3 mm.
- Always follow the recommended coating system of your paint supplier.
- For a copy of our full Guide Lines for Door Blanks, please speak to your stockist or visit www.ohi@industri.com

UK Contact:

O.H. Industri A/S
 Smedevej 17
 7430 Ikast
 Denmark
 T: +45 9725 1200
 F: +45 9725 1617
ohi@oh-industri.dk
www.oh-industri.com