

Door blank with Compact Laminate - 55 mm stiles and rails

Construction: 4 mm Compact laminate (Appr. 1200-1500 kg/m³)
 1,5 mm long grain veneer
 0,3 mm Aluminium - moisture barrier - stabilizer
 1,5 mm long grain inner veneer
 Insulation - Polystyrene
 1,5 mm long grain inner veneer
 0,3 mm Aluminium - moisture barrier - stabilizer
 1,5 mm long grain veneer
 4 mm Compact laminate (Appr. 1200-1500 kg/m³)

U-Value:

U-Value - W/m ² K									
60 mm	68 mm	80 mm							
0,80	0,71	0,63							

Size 1000 mm x 2000 mm

Heat conductivity is calculated on the basis of the practical heat conductivity of each included material - taken from data sheets and DS418, version 6, 2002. Also relating to EN 12524.

Weight:

Weight appr. Kg./m ²									
60 mm	68 mm	80 mm							
19,8	20,7	21,9							

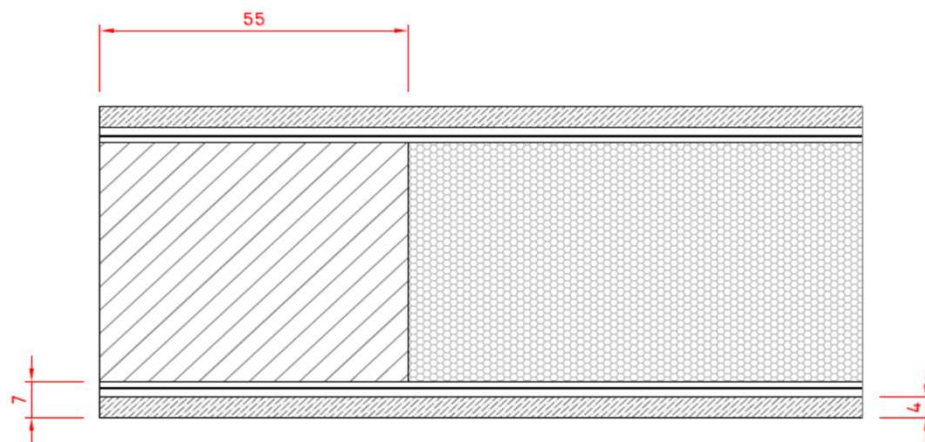
Size 1000 mm x 2000 mm

Compact Laminate: Calculation is based on an average weight value, specified for this material - 1350 kg/m³

Measure: Min.: 250 x 450 mm - Max.: 1200 x 2400 mm

Tolerances: Width/Height: +/- 1 mm - Diagonal: +/- 2 mm - Thickness: +/- 0,8 mm

Section drawing:



Made: 05.03.2014	Data sheet: PMN	Draw.: HMN
Revised: 20.09.2019	Data sheet: CRS	Draw.: HMN

O.H.Industri A/S
 Smedevej 17
 DK - 7430 Ikast
 +45 9725 1200
www.ohindustri.com