

## Performance Products



Fire doors and panels.

Acoustic doors and panels.

Made to measure performance products.

Tested for European standards.



Fire	Thickness mm	U-Value W/m <sup>2</sup> K	Core material	Weight kg/m <sup>2</sup>	Max size mm
------	--------------	----------------------------	---------------	--------------------------	-------------

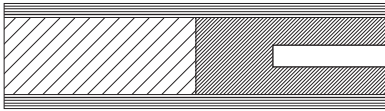
### FD30 – Fire door



44	1.90	Massive Plywood	24.50	935 x 2,150
44	1.90	Massive Plywood	24.50	1,155 x 2,400

### EI30 – Fire door

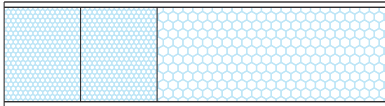
Door blank with 110 mm Stiles and rails



68	1.20	Fibre board/ 12 mm gypsum/ Fibre board	23.90	1,200 x 2,400
----	------	--	-------	---------------

### A1 – Non-combustible panels

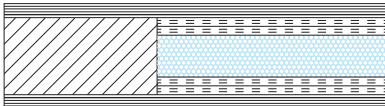
Aluminum/Aluminum



28	1.13	Rockwool Conlit 150P	9.60	1,500 x 3,000
35	0.92	Rockwool Conlit 150P	10.00	1,500 x 3,000
48	0.69	Rockwool Conlit 150P	10.00	1,500 x 3,000

Accoustic	Thickness mm	U-Value W/m <sup>2</sup> K	Core material	Weight kg/m <sup>2</sup>	Dimension mm
-----------	--------------	----------------------------	---------------	--------------------------	--------------

### Accoustic door – 42dB

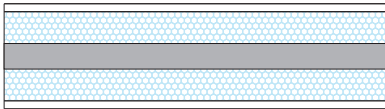


68	1.29	HDF/Sonitus/Polystyrene	43.20	1,200 x 1,400
----	------	-------------------------	-------	---------------

### Accoustic panels – 39dB

Available as:

HDF/HDF, ALU/HDF, HPL/HPL

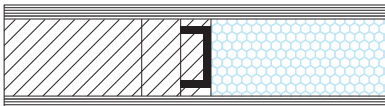


32	1.49	Polystyrene/Bitumen	24.90	1,200 x 2,400
43	1.00	Polystyrene/Bitumen	25.30	1,200 x 2,400
48	0.87	Polystyrene/Bitumen	25.40	1,200 x 2,400
52	0.79	Polystyrene/Bitumen	25.60	1,200 x 2,400
54	0.76	Polystyrene/Bitumen	25.60	1,200 x 2,400

Specification	Thickness mm	U-Value W/m <sup>2</sup> K	Core material	Weight kg/m <sup>2</sup>	Dimension mm
---------------	--------------	----------------------------	---------------	--------------------------	--------------

### Door blank with composite profile

Door blank with ChenChen veneer 110 mm stiles and rails combined with a composite profile on the vertical side of the door.



68	0.98	Polystyrene	20.40	1,200 x 2,400
----	------	-------------	-------	---------------